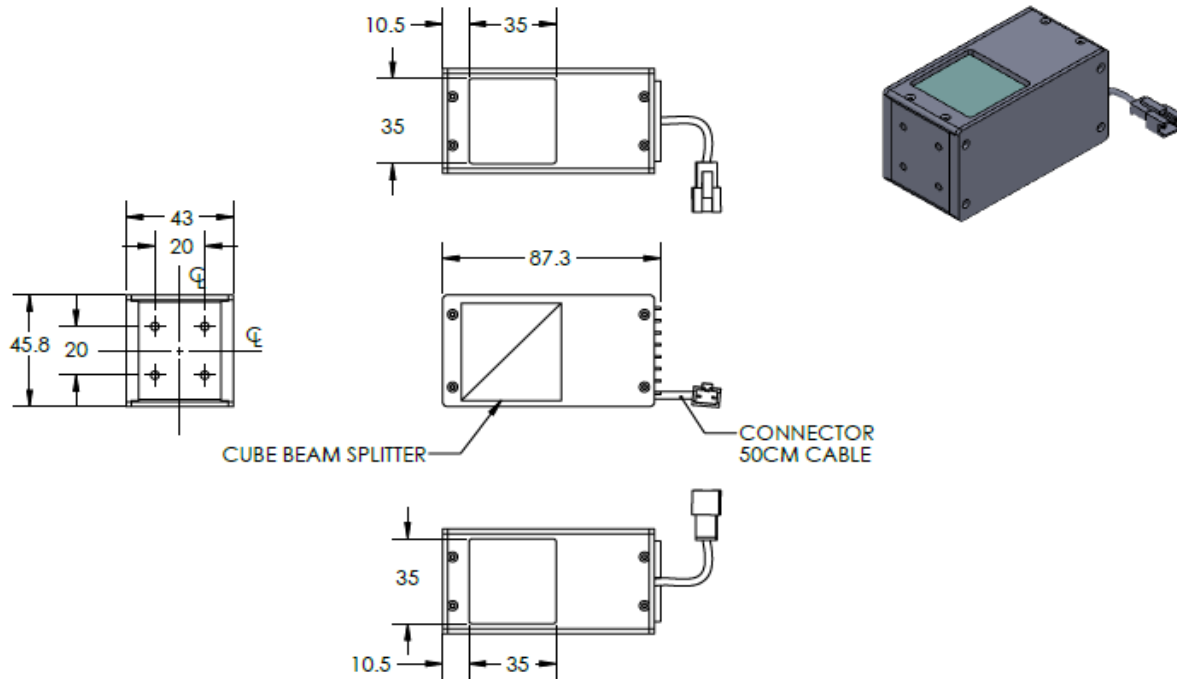




# ILLUMINATOR DATA-ID

**CASC-00-035-X-G-24V**

## Lighting Dimension




Mechanical Information	
Casing Material	Aluminium
Storage Temperature Range	Temp 0-45°C, Humidity 20-85%
Weight	318 g
Length / Outer Diameter	87.3 mm
Width / Inner Diameter	43 mm
Thickness / Height	45.8 mm



# ILLUMINATOR DATA-ID

## CASC-00-035-X-G-24V

<b>Optical Information</b>					
Part Number		CASC-00-035-X-G-24V			
LED Color		GREEN			
Wavelength	(nm)	525			
Intensity (±15%)	(Lux)	8730	6060	4400	3350
Working Distance	(mm)	20	30	40	50
Illumination (number of row)		X			
Illumination Active Area					
Active Length / Outer Diameter	(mm)	35			
Active Width / Inner Diameter	(mm)	35			
Emission angle	(deg.)	0			
Eye Safety Class ( IEC62471 )		EXEMPT			
<b>Electrical Information</b>					
Lighting Supply Voltage (constant voltage mode)		24V ± 2%			
Continuous Current	(mA)	288			
Power Consumption	(W)	6.912			
Lighting casing temperature, Operating after 60 minutes	°C	63			
<b>Strobe Mode Specification</b>					
Pulse Operation		YES			
Max. Lighting Supply Voltage (Constant voltage power supply)	(V)	Pulsing at 24VDC to 48VDC, 0-10% Duty Cycle, Recommended at 36VDC			
Pulse Current, (Max. 10msec) (Constant current power supply)	(mA)	864			
Max. Trigger Pulse Duration	(msec)	10			
Duty Cycle		0-10%			
<b>Additional Information</b>					
Additional Cooling Method		Attached to machine part for better heat dissipation			
Intensity Controller Selection		ANG, ST, SD and SDA Series			
CE Conformity		YES			
RoHS Compliance		YES			
<b>Connection</b>					
Connector Type (Default):		JST SMR-03V			
Cable Length out from lighting :	(mm)	500			
Pin Configuration :		Pin	Signal	Cable Color	
		1	LED +	RED	
		2	N.C.	---	
		3	LED -	WHITE	
					
<b>Application</b>					
Illumination Type		Coaxial Illumination			
Application Use		Surface inspection and alignment, wafer, metal surface, film, LCD and glass, pattern on PCB.			



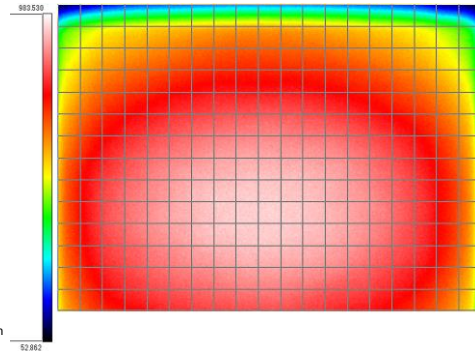
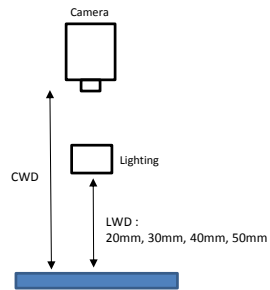
# ILLUMINATOR DATA-ID

CASC-00-035-X-G-24V

Uniform Graph ( Relative Irradiation Strength) - Representative pattern

Lens focal length,  $f = 0.253$   
CWD = 101mm  
LWD = 20mm, 30mm, 40mm, 50mm  
Lighting angle: 0

Tolerance %	L X W
10%	13 X 10
20%	28 X 19
30%	34 X 23
40%	36 X 26



\* 1 cell = 2x2mm



**VISION CONSULTANCY**  
MAKING THE UNSEEN VISIBLE

Thank you for downloading this document from  
[www.machine-vision-shop.com](http://www.machine-vision-shop.com)

If you have any questions, you need help composing the  
right package for your application or do you want to order?

Feel free to contact us via e-mail at [sales@vision-consultancy.nl](mailto:sales@vision-consultancy.nl) or visit our webshop.

Our vision experts are happy to help you.



Natascha Overhof



Christian Cromptoets



**VISION CONSULTANCY**

Robert Schumann domein 2  
6229 ES Maastricht  
The Netherlands

+31 (0) 438 522 651

[sales@vision-consultancy.nl](mailto:sales@vision-consultancy.nl)  
[www.machine-vision-shop.com](http://www.machine-vision-shop.com)

Scan me to visit  
[machine-vision-shop](http://machine-vision-shop)

