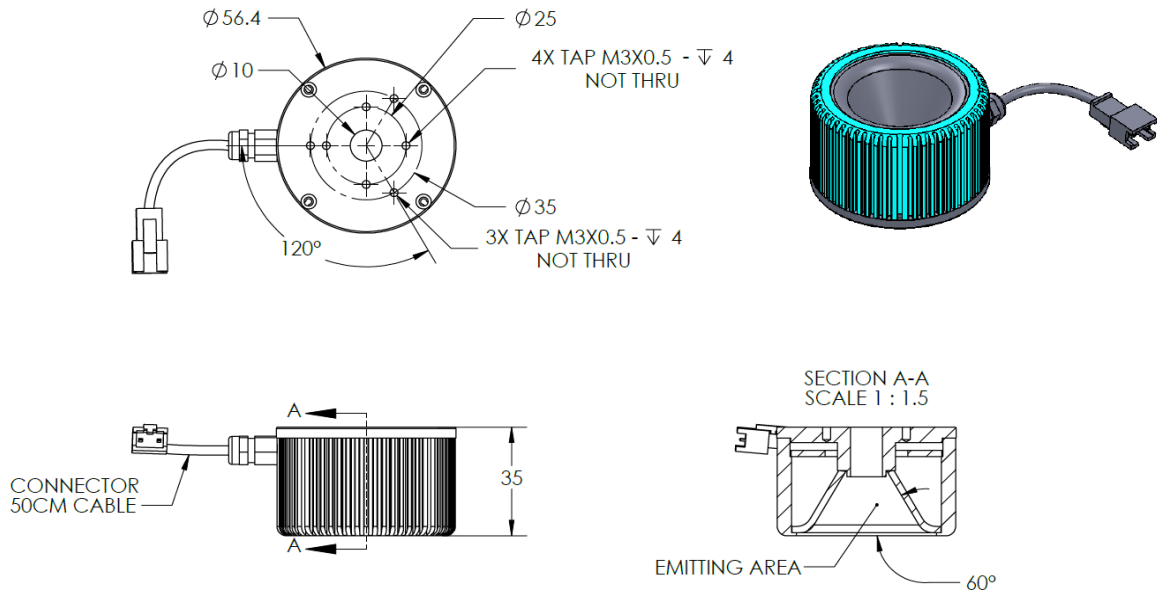




# ILLUMINATOR DATA-ID

**DLR3-60-050-1-G-24V**

## Lighting Dimension




Mechanical Information	
Casing Material	Aluminium
Storage Temperature Range	Temp 0-45°C, Humidity 20-85%
Weight	100 g
Length / Outer Diameter	56.4 mm
Width / Inner Diameter	10 mm
Thickness / Height	35 mm



# ILLUMINATOR DATA-ID

## DLR3-60-050-1-G-24V

<b>Optical Information</b>			
Part Number		DLR3-60-050-1-G-24V	
LED Color		GREEN	
Wavelength	(nm)	525	
Intensity (±15%)	(Lux)	TBA	
Working Distance	(mm)	5	
Illumination (number of row)		1	
Illumination Active Area			
Active Length / Outer Diameter	(mm)	44	
Active Width / Inner Diameter	(mm)	12	
Emission angle	(deg.)	60	
Eye Safety Class ( IEC62471 )		EXEMPT	
<b>Electrical Information</b>			
Lighting Supply Voltage (constant voltage mode)		24V ± 2%	
Continuous Current	(mA)	120	
Power Consumption	(W)	2.88	
Lighting casing temperature, Operating after 60 minutes	°C	52	
<b>Strobe Mode Specification</b>			
Pulse Operation		YES	
Max. Lighting Supply Voltage (Constant voltage power supply)	(V)	Pulsing at 24VDC to 48VDC, 0-10% Duty Cycle Recommended at 36VDC	
Pulse Current, (Max. 10msec) (Constant current power supply)	(mA)	360	
Max. Trigger Pulse Duration	(msec)	10	
Duty Cycle		0-10%	
<b>Additional Information</b>			
Additional Cooling Method		Attached to machine part for better heat dissipation	
Intensity Controller Selection		ANG, ST, SD and SDA Series	
CE Conformity		YES	
RoHS Compliance		YES	
<b>Connection</b>			
Connector Type (Default):		JST SMR-03V	
Cable Length out from lighting :	(mm)	500	
Pin Configuration :		Pin	Signal
		1	LED +
		2	N.C.
		3	LED -
			Cable Color
			RED
			---
			WHITE
			
<b>Application</b>			
Illumination Type		Direct Illumination	
Application Use		Substrate inspection, label inspection, flat surface, fiducially recognition.	

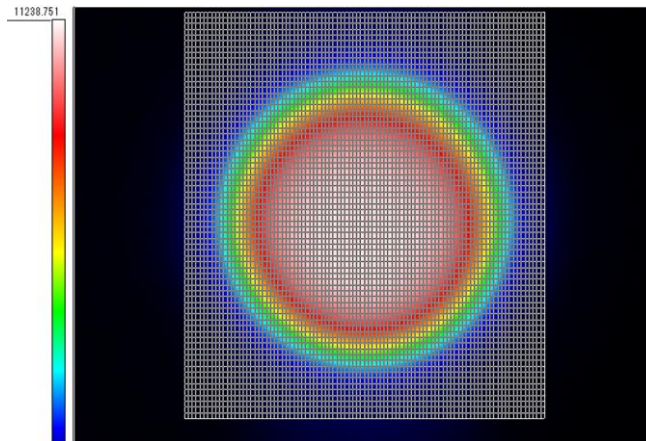


# ILLUMINATOR DATA-ID

**DLR3-60-050-1-G-24V**

Uniform Graph ( Relative Irradiation Strength) - Representative pattern

WD	Tolerance	Diameter
5mm	10%	26mm
5mm	20%	32mm
5mm	30%	35mm





**VISION CONSULTANCY**  
MAKING THE UNSEEN VISIBLE

Thank you for downloading this document from  
[www.machine-vision-shop.com](http://www.machine-vision-shop.com)

If you have any questions, you need help composing the  
right package for your application or do you want to order?

Feel free to contact us via e-mail at [sales@vision-consultancy.nl](mailto:sales@vision-consultancy.nl) or visit our webshop.

Our vision experts are happy to help you.



Natascha Overhof



Christian Cromptoets



**VISION CONSULTANCY**

Robert Schumandomein 2  
6229 ES Maastricht  
The Netherlands

+31 (0) 438 522 651

[sales@vision-consultancy.nl](mailto:sales@vision-consultancy.nl)  
[www.machine-vision-shop.com](http://www.machine-vision-shop.com)

Scan me to visit  
[machine-vision-shop](http://machine-vision-shop)

