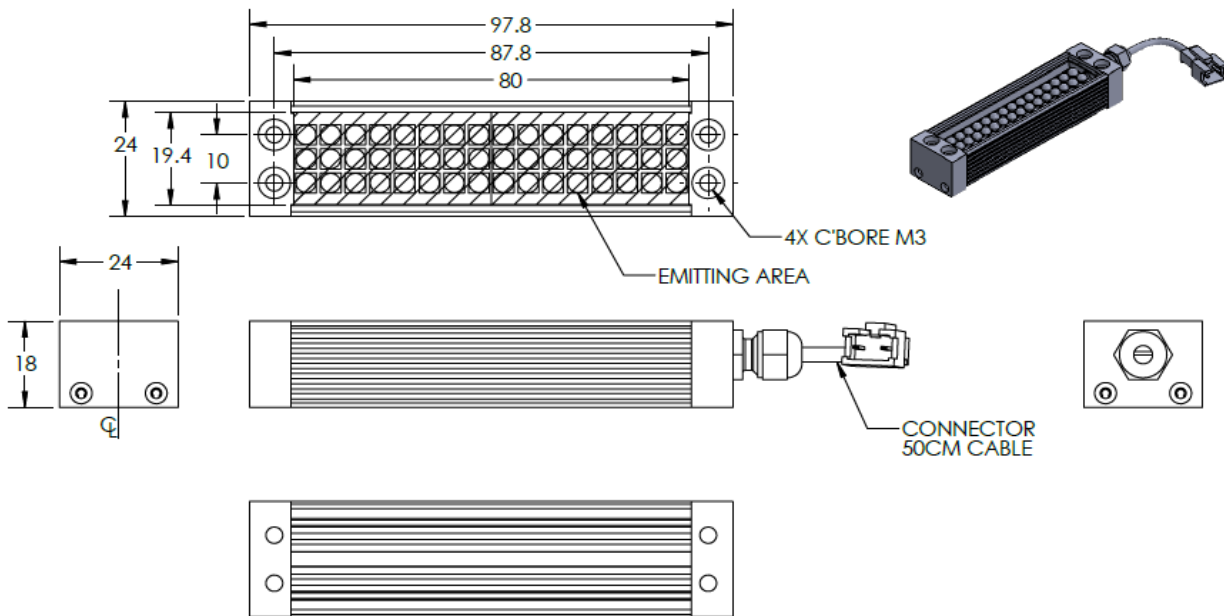




ILLUMINATOR DATA-ID

LBRP-00-080-3-W-24V

Lighting Dimension




Mechanical Information	
Casing Material	Aluminium
Storage Temperature Range	Temp 0-45°C, Humidity 20-85%
Weight	80 g
Length / Outer Diameter	97.8 mm
Width / Inner Diameter	24 mm
Thickness / Height	18 mm



ILLUMINATOR DATA-ID

LBRP-00-080-3-W-24V

Optical Information																													
Part Number		LBRP-00-080-3-W-24V																											
LED Color		WHITE																											
Wavelength	(nm)	* Refer to the Chromaticity Table Below																											
Intensity (±15%)	(Lux)	17940	16060	15810																									
Working Distance	(mm)	80	90	100																									
Illumination (number of row)		3																											
Illumination Active Area																													
Active Length / Outer Diameter	(mm)	80																											
Active Width / Inner Diameter	(mm)	19.4																											
Emission angle	(deg.)	0																											
Eye Safety Class (IEC62471)		EXEMPT																											
*CHROMATICITY TABLE		<table border="1"> <tr> <td>X</td> <td>0.296</td> <td>0.287</td> <td>0.307</td> <td>0.311</td> <td></td> </tr> <tr> <td>Y</td> <td>0.276</td> <td>0.295</td> <td>0.315</td> <td>0.294</td> <td></td> </tr> </table> <table border="1"> <tr> <td>X</td> <td>0.311</td> <td>0.307</td> <td>0.33</td> <td>0.33</td> <td></td> </tr> <tr> <td>Y</td> <td>0.294</td> <td>0.315</td> <td>0.339</td> <td>0.318</td> <td></td> </tr> </table>				X	0.296	0.287	0.307	0.311		Y	0.276	0.295	0.315	0.294		X	0.311	0.307	0.33	0.33		Y	0.294	0.315	0.339	0.318	
X	0.296	0.287	0.307	0.311																									
Y	0.276	0.295	0.315	0.294																									
X	0.311	0.307	0.33	0.33																									
Y	0.294	0.315	0.339	0.318																									
Electrical Information																													
Lighting Supply Voltage (constant voltage mode)		24V ± 2%																											
Continuous Current	(mA)	160																											
Power Consumption	(W)	3.84																											
Lighting casing temperature, Operating after 60 minutes	°C	60.6																											
Strobe Mode Specification																													
Pulse Operation		YES																											
Max. Lighting Supply Voltage (Constant voltage power supply)	(V)	Pulsing at 24VDC to 48VDC, 0-10% Duty Cycle, Recommended at 36VDC																											
Pulse Current, (Max. 10msec) (Constant current power supply)	(mA)	480																											
Max. Trigger Pulse Duration	(msec)	10																											
Duty Cycle		0-10%																											
Additional Information																													
Additional Cooling Method		Attached to machine part for better heat dissipation																											
Intensity Controller Selection		ANG, ST, SD and SDA Series																											
CE Conformity		YES																											
RoHS Compliance		YES																											
Connection																													
Connector Type (Default):		JST SMR-03V																											
Cable Length out from lighting :	(mm)	500																											
Pin Configuration :		Pin	Signal	Cable Color																									
		1	LED +	RED																									
		2	N.C.	---																									
		3	LED -	WHITE																									
																													
Application																													
Illumination Type		Direct Illumination																											
Application Use		General illumination, label inspection, character inspection, code recognition.																											



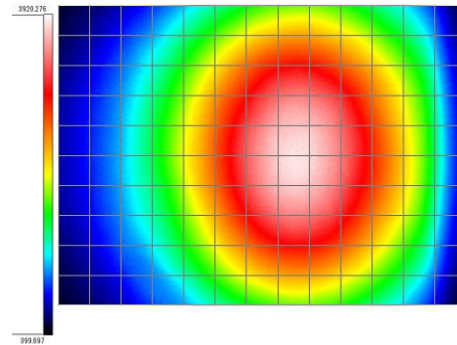
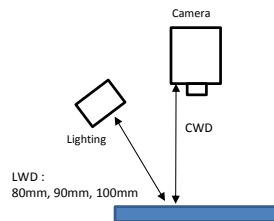
ILLUMINATOR DATA-ID

LBRP-00-080-3-W-24V

Uniform Graph (Relative Irradiation Strength) - Representative pattern

Lens focal length, $f = 0\text{mm}$
CWD = 365mm
LWD = 80mm, 90mm, 100mm
Lighting angle: 45°

Tolerance %	L X W
10%	24 x 34
20%	40 x 54
30%	53 x 69
40%	65 x 83



* 1 cell = 10mm x 10mm



VISION CONSULTANCY
MAKING THE UNSEEN VISIBLE

Thank you for downloading this document from
www.machine-vision-shop.com

If you have any questions, you need help composing the
right package for your application or do you want to order?

Feel free to contact us via e-mail at sales@vision-consultancy.nl or visit our webshop.

Our vision experts are happy to help you.



Natascha Overhof



Christian Cromptoets



VISION CONSULTANCY

Robert Schumann domein 2
6229 ES Maastricht
The Netherlands

+31 (0) 438 522 651

sales@vision-consultancy.nl
www.machine-vision-shop.com

Scan me to visit
machine-vision-shop

