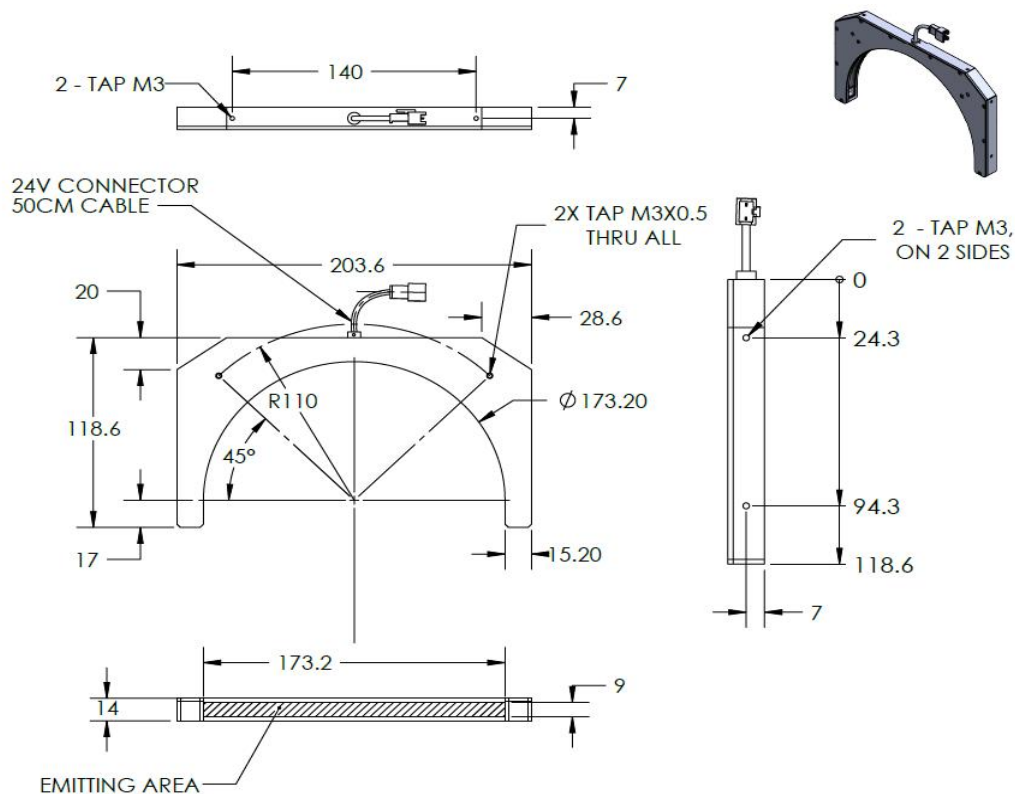




## ILLUMINATOR DATA (ID)

### LLAC-90-100-1-W-24V

#### Lighting Dimension



#### Mechanical Information

Casing Material	Aluminium
Storage Temperature Range	0 - 45°C
Storage Humidity Range	20 - 85%
Weight	300 g
Length / Outer Diameter	203.6 mm
Width / Inner Diameter	118.6 mm
Thickness / Height	14 mm



## ILLUMINATOR DATA (ID)

### LLAC-90-100-1-W-24V

Lighting Information																
Part Number	LLAC-90-100-1-W-24V															
LED Color	WHITE															
Wavelength	REFER TO CHROMACITY TABLE BELOW															
Working Distance	20 mm		25 mm		30 mm											
Intensity (±15%)	TBA		TBA		TBA											
Illumination (number of row)	1															
Illumination Active Area	Active Length / Outer Dia.			173.2 mm												
	Active Width / Inner Dia.			9 mm												
Emission angle	90															
Eye Safety Class ( IEC62471 )	EXEMPT															
Chromaticity Table	<table><tr><td>X</td><td>0.296</td><td>0.287</td><td>0.307</td><td>0.311</td></tr><tr><td>Y</td><td>0.276</td><td>0.295</td><td>0.315</td><td>0.294</td></tr></table>						X	0.296	0.287	0.307	0.311	Y	0.276	0.295	0.315	0.294
X	0.296	0.287	0.307	0.311												
Y	0.276	0.295	0.315	0.294												
For White colour only	<table><tr><td>X</td><td>0.311</td><td>0.307</td><td>0.33</td><td>0.33</td></tr><tr><td>Y</td><td>0.294</td><td>0.315</td><td>0.339</td><td>0.318</td></tr></table>						X	0.311	0.307	0.33	0.33	Y	0.294	0.315	0.339	0.318
X	0.311	0.307	0.33	0.33												
Y	0.294	0.315	0.339	0.318												

Electrical Information	
Rated Constant Voltage	24V $\pm 2\%$
Rated Constant Current	210 mA
Power Consumption	5.04 W
Casing temperature, After 60 minutes operation	51.4 °C

Strobe Mode Specification		
*Normal Strobe Voltage	24 V	
*Normal Strobe Current	210 mA	
Overdrive Voltage Range	Min: 36 V	Max: 48 V
Overdrive Current Range	Min: 0.468 A	Max: 0.825 A
Recommended Overdrive Voltage	36 V	
**Max. Trigger Pulse Duration	10 msec	
**Max. Duty Cycle	10%	


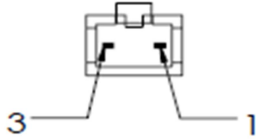
\*Normal strobe means the lighting is operated using the rated power. Overdrive means the power supplied to the lighting exceeded the rated power.

\*\*Overdrive condition must not exceed the max. trigger pulse duration and max. duty cycle.



## ILLUMINATOR DATA (ID)

### LLAC-90-100-1-W-24V

Connection Information			
Connector Type (Default)	JST SMR-03V		
Cable Length	50 cm		
Pin Configuration 	Pin	Signal	Cable Colour
	1	LED +	Red
	2	N.C	-
	3	LED -	White
			

Additional Information	
Additional Cooling Method	Attached to machine part for better heat dissipation
Intensity Controller Selection	SD, ST, ANG, LC, SDA, SDP series
CE Conformity	YES
RoHS Compliance	YES

Application	
Illumination Type	Half Circle Illumination
Application Use	Edge Detection, Scratch on Metal or Glossy Surface



## ILLUMINATOR DATA (ID)

### LLAC-90-100-1-W-24V

Lighting Pattern				
Working Distance	For further details please contact us			
Display and Image				
Data Results	Horizontal	Meas.(mm)	Vertical	Meas.(mm)
	90%		90%	
	80%		80%	
	70%		70%	
	60%		60%	
	50%		50%	
	40%		40%	
	30%		30%	
	20%		20%	
	10%		10%	



**VISION CONSULTANCY**  
MAKING THE UNSEEN VISIBLE

Thank you for downloading this document from  
[www.machine-vision-shop.com](http://www.machine-vision-shop.com)

If you have any questions, you need help composing the  
right package for your application or do you want to order?

Feel free to contact us via e-mail at [sales@vision-consultancy.nl](mailto:sales@vision-consultancy.nl) or visit our webshop.

Our vision experts are happy to help you.



Natascha Overhof



Christian Cromptoets



**VISION CONSULTANCY**

Robert Schumandomein 2  
6229 ES Maastricht  
The Netherlands

+31 (0) 438 522 651

[sales@vision-consultancy.nl](mailto:sales@vision-consultancy.nl)

Scan me to visit  
[machine-vision-shop](http://machine-vision-shop)

